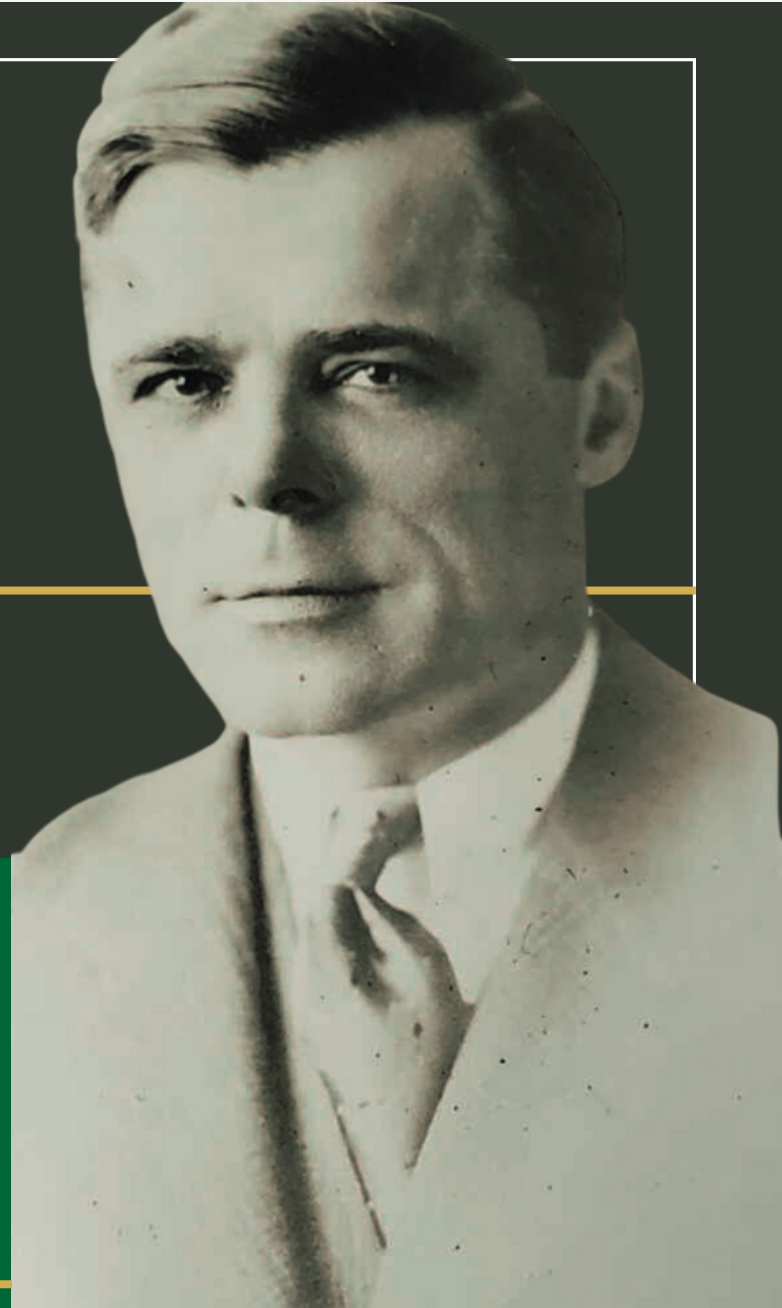


A DIAMOND IN THE ROUGH

WESTBOROUGH'S RICH & RESILIENT HISTORY

1940S
SPECIAL
EDITION



THE PFEFFER COLLECTION



Walter Pfeffer, Sr.

Foreword

June 30, 2023

Dear Fellow Westborough Members, Families, and Friends:

Welcome to this **Special Edition: The Pfeffer Collection**, which is part of our e-publication *A Diamond in the Rough: Westborough's Rich & Resilient History*. In this special edition we will share a treasure trove of photos from the 1940s from the effects of Robert Niver Pfeffer (8/26/1923 – 10/5/2001), son of Walter Pfeffer, Sr., and generously gifted to Westborough by Walter L. Pfeffer, II, Robert's son. These photos are in addition to others used in Volumes 1, 2 and 3 of our publication, which were also donated by Mr. Pfeffer from his family's collection. As you read in Volume 3, Robert lived with his father at the former house on the Club's grounds in the late 1940s. Many of these photos were taken from the location of that house looking out towards different areas of the property.

The digital images shown in this edition were achieved through high-resolution scanning of Mr. Pfeffer's printed photographs and, thanks to the high scanning resolution, we are able to share fine details that would otherwise not be visible. We are also fortunate that most of the photos were originally taken during months when the trees were barren of leaves, allowing full views of the course and facilities. Watch for prints of these photos as we display them around the Club for all to enjoy.

Of course, our Club's Heritage Committee is constantly searching for Club-related memorabilia to add to our archives, so please contact one of us if you have items to donate or otherwise share.

Enjoy!



Ted Zimmermann
Club Historian



Jim Capek
General Manager



Hannah Rowland
Communications Manager



Rachel Barr
Membership & Marketing Director



Clubhouse entrance and connection to Westborough Room overlooking No. 18 green (location of today's practice green)



Walter Pfeffer, Sr. and his staff - 1948



Clubhouse Entrance



Clubhouse entrance and connection to Westborough Room



Back of Clubhouse entrance and connection to Westborough Room



Back of Clubhouse entrance and connection to Westborough Room



Back of Westborough Room



Patio and back of Clubhouse



Inside of Westborough Room



West side of Clubhouse, parking lot, and Pro Shop (at right)



Swimming Pool



Looking southwest from No. 1 tee box towards today's No. 14 tee box



House on the Club grounds (looking southwest)



House location - Situated between No. 1 fairway and No. 7 green



House looking north from No. 1 fairway



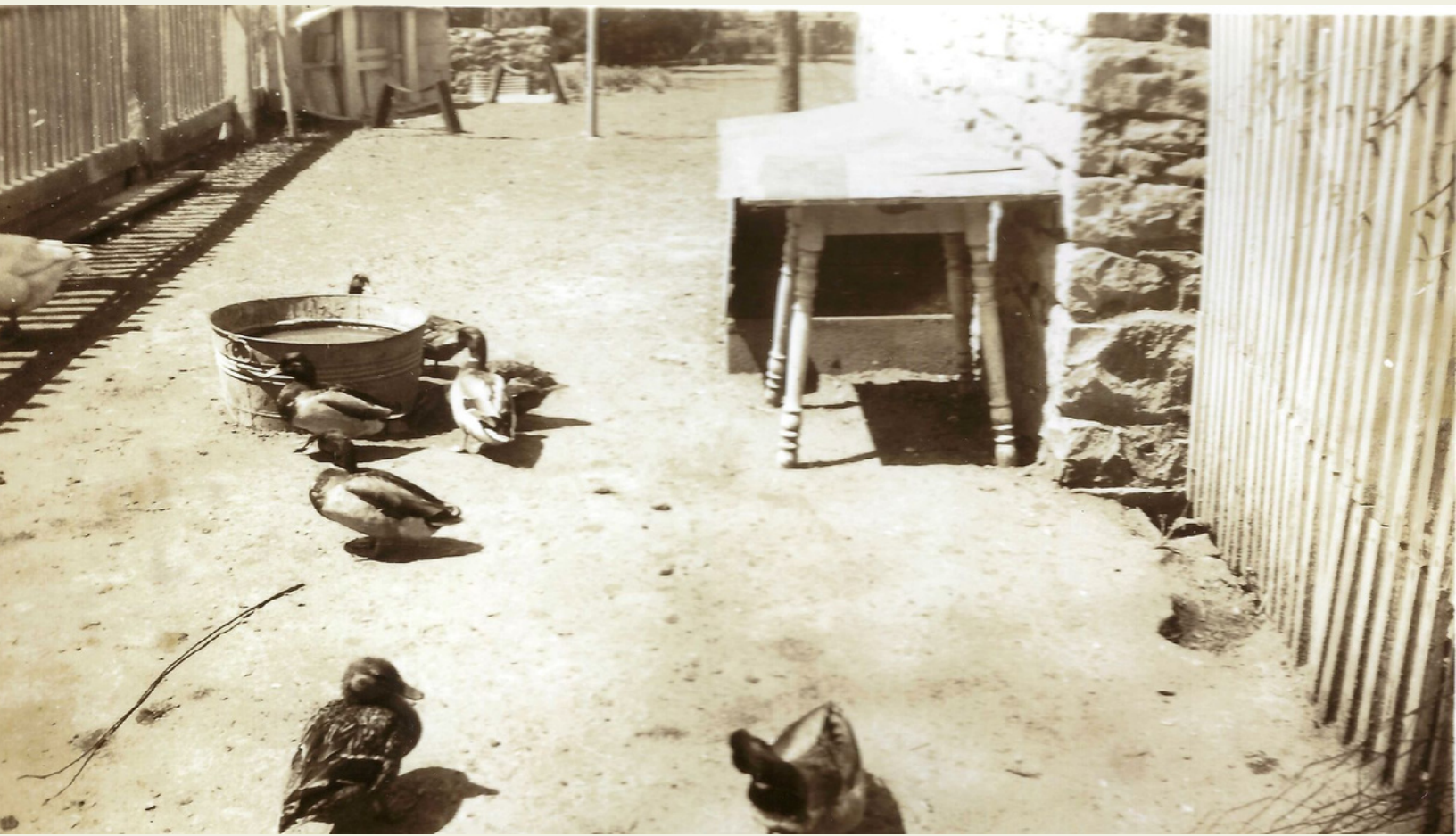
House looking northeast from No. 1 fairway



Outdoor grill in backyard of house overlooking No. 1 fairway – was used by Club Chef



House looking east



Ducks inside fence on side yard of house



Ducks inside fence behind house



Walter Pfeiffer, Sr.'s Packard on driveway in front of house



Looking west on driveway towards front of house



Looking north from front of house towards Lockwood Ave. over No. 7 green at the time (location of today's netted practice area)



Looking north from front of house towards Lockwood Ave. over No. 7 green at the time



Looking north from front of house towards Lockwood Ave. over No. 7 green at the time



Looking northwest from front of house over No. 8 fairway towards No. 9 tee box (today's Church location)



Pro Shop at top of parking lot next to No. 18 green (today's practice green)
looking towards No. 18 tee box – deck chairs for gallery to watch players
finishing rounds



Pro Shop – Note the house visible to the right



Berry Rd. Entrance



Looking east from location of today's No. 10 tee box at walking path beginning at entrance behind today's No. 13 tee box – originally for people arriving via the Glendale Station



Looking east from No. 18 tee box over today's No. 13 fairway – a steam locomotive is seen traveling west on the Missouri-Pacific tracks



Looking south from area behind today's Pro Shop towards today's No. 13 ladies' tee box



Looking southwest from back of house towards today's No. 13
and 17 greens



West side of Clubhouse, parking lot, pro shop, and No. 1 tee box



Looking north towards Lockwood Ave. over the west side of the lake from No. 2 fairway



Original pumphouse behind No. 2 green and with chairs at No. 3 tee box – looking north towards Lockwood Ave.



Looking north on walking path leading to Lockwood Ave. – tennis courts on left and No. 10 on right



Practice area located between No. 9 and No. 10 (behind tennis courts and facing Lockwood Ave. where Church property is today)



THEN & NOW
Berry Rd. Entrance – Looking West/In

